



TruckStop Express

OPERATOR GUIDE

November 2008



Cutting edge simplicity

Table of Contents

GETTING STARTED.....	4
• Minimum PC System Requirements	4
• Programming Kit.....	4
TRUCKSTOP EXPRESS SOFTWARE INSTALLATION.....	5
SETUP AND CONFIGURATION.....	11
TRUCKS.....	16
• Creating a New Truck	16
• Editing a Truck.....	20
• Deleting a Truck.....	21
USERS	22
• Creating a New User.....	22
• Editing an Existing User	24
• Deleting a User	25
READERS	26
• Loading User Data into the Readers.....	26
HISTORY.....	28
• Uploading History.....	28
• Viewing History	30
• Sorting History Events	31
• History Filter.....	32
REPORTS	33
• Create a User Report.....	33
• Create a History Report	33
APPENDIX I - LED AND BEEPER INFORMATION	34
• Un-Initialized Reader	34
• Initialized Reader	34
• Invalid User.....	35
• Activated Truck.....	35
• Programming a Reader.....	36
• Successful Data Transfer.....	37
• Error on Data Transfer:	37

© 2008 Copyright Cansec Systems Ltd.
All rights reserved.

Getting Started

MINIMUM PC SYSTEM REQUIREMENTS

- One available USB port
- CD-ROM disk drive
- 5 MB of free hard drive space
- Microsoft Windows® XP or Windows® Vista
- Adobe Reader 6.0 or greater
- Internet Explorer 4.0 or greater

PROGRAMMING KIT

The programming kit consists of four parts:



SOFTWARE

*Mini CD

USB ADAPTOR

*Plugs into USB port



WAND

*Plugs into USB Adaptor

**iButton®
PROGRAMMING KEY**

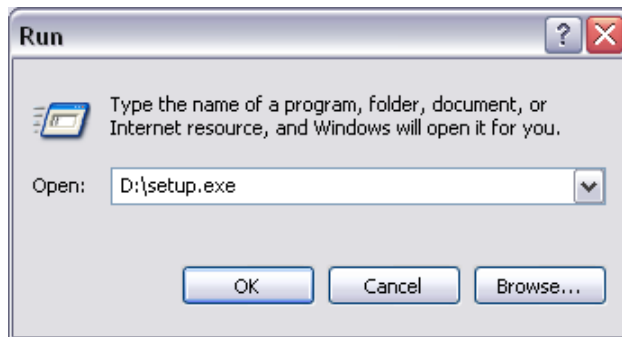
*Snaps into Wand



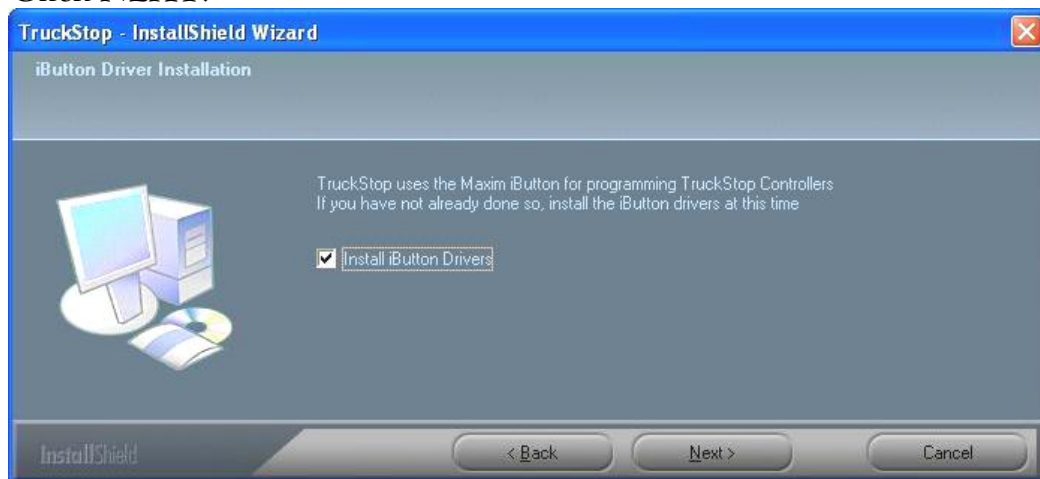
TruckStop Express Software Installation

NOTE: Do not plug in the USB adaptor until prompted to do so.

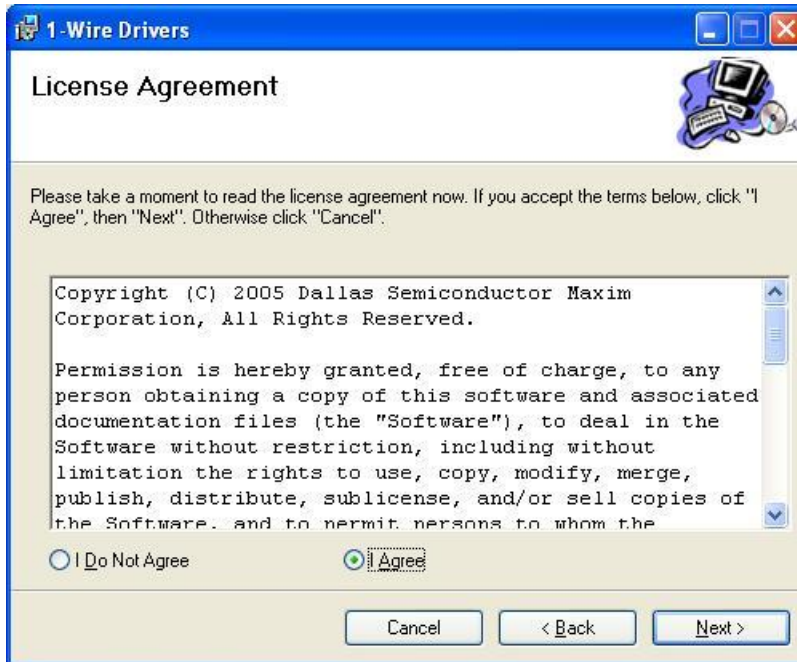
1. Insert the TruckStop Express Software mini CD into your CD-ROM drive.
2. Software setup should start automatically.
3. If the software setup does not start automatically, manually begin setup:
 - Click **START > Run**
 - Type **D:\setup.exe** where "D" is the name of your CD-ROM drive
 - Click **OK**



4. When the *Installation Wizard* appears, click **NEXT**.
5. Make sure the **Install iButton Drivers** check box is checked.
6. Click **NEXT**.

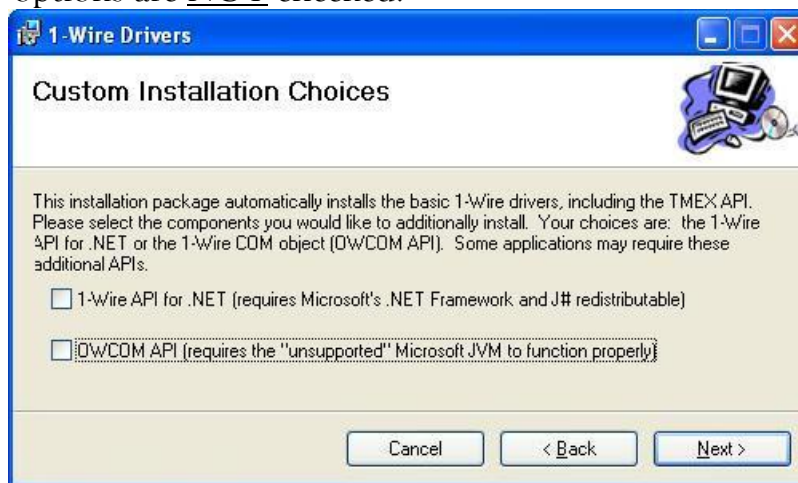


7. When the *1-Wire Drivers Setup Wizard* appears, click **NEXT**.
8. When the *Licence Agreement Window* appears, select **I AGREE**.



9. Click **NEXT**.

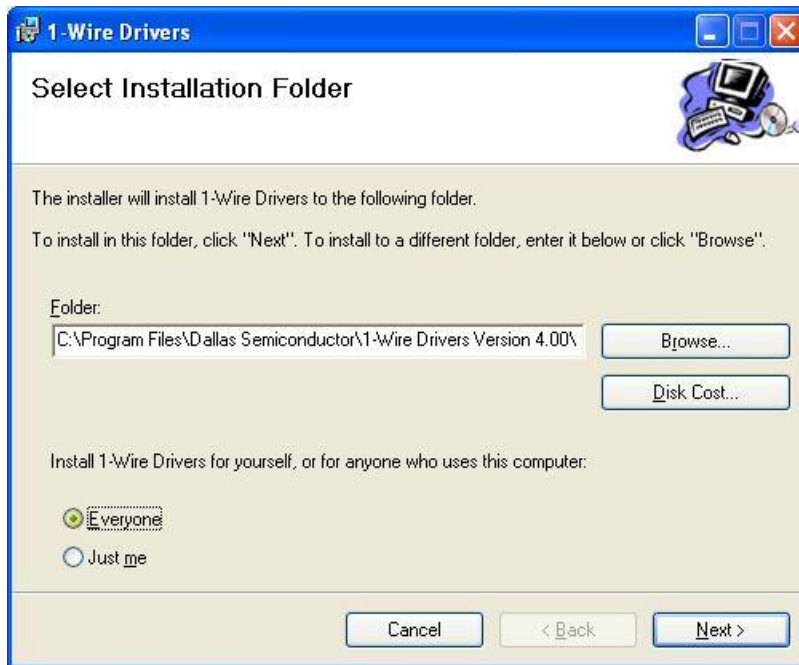
10. Make sure the **1-Wire API for .NET** and the **OWCOM API** options are **NOT** checked.



11. Click **NEXT**.

12. Unplug any 1-Wire[®] USB Devices and click **NEXT**.

13. The 1-Wire[®] drivers will be installed into the folder shown. To change the destination click **BROWSE** or type the destination folder in the appropriate field.

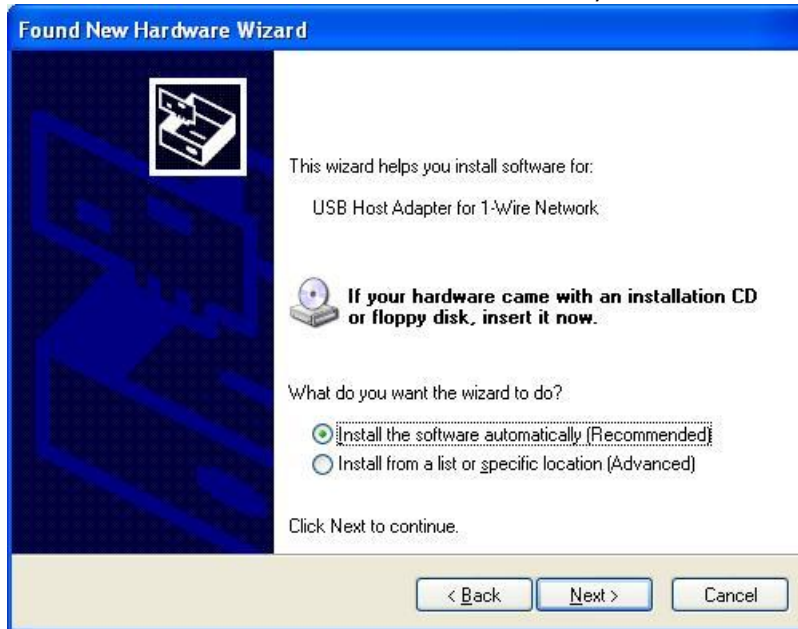


14. Select the **EVERYONE** radio button and click **NEXT**.
15. Click **NEXT** to confirm the installation.
16. Wait while the drivers are installed.
17. When prompted, plug in the USB adaptor. Do NOT click **OK**.



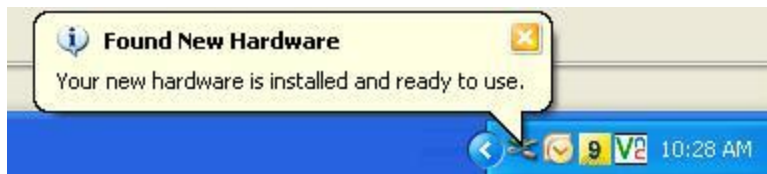
18. Windows will display the *Found New Hardware Wizard*.
19. Select the **No, Not This Time** radio button and click **NEXT**.

20. Select **Install the software automatically** and click **NEXT**.

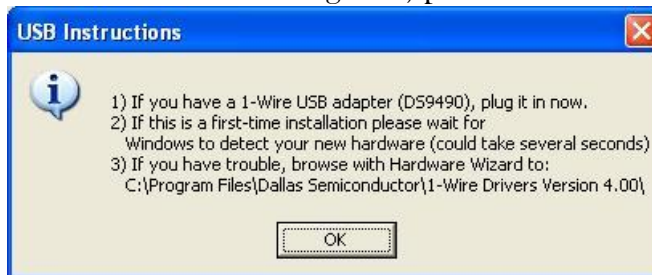


21. Click **FINISH** to complete the new hardware installation.

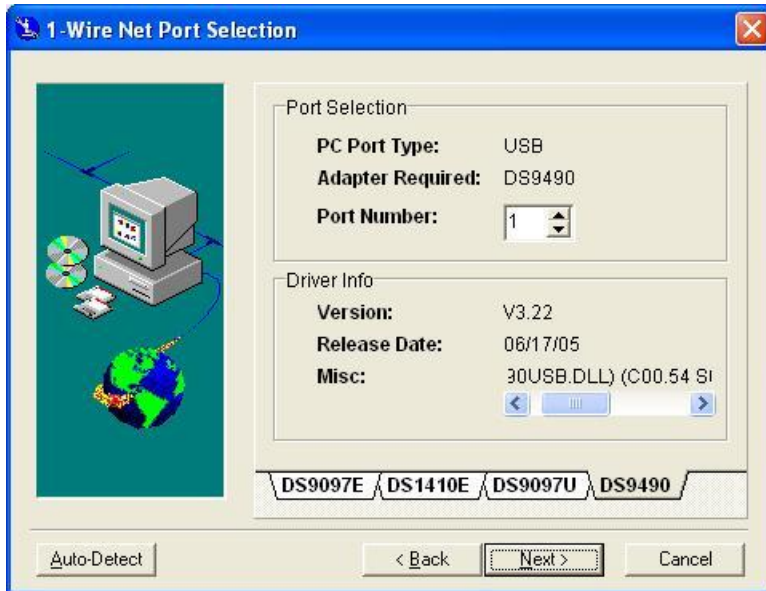
22. The *Found New Hardware* balloon will pop up on the taskbar.



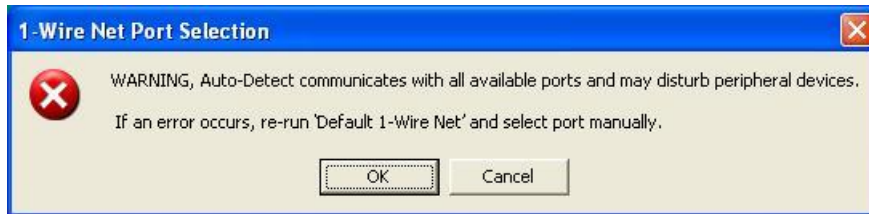
23. On the 1-Wire[®] dialog box, press **OK**.



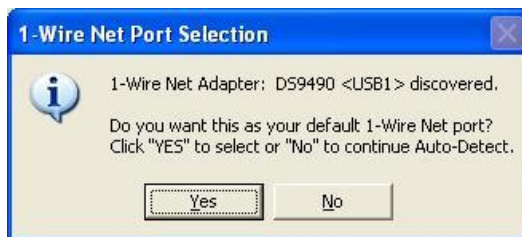
24. The *Port Selection* window will appear.
25. Click **AUTO DETECT**.



26. Click **OK**.

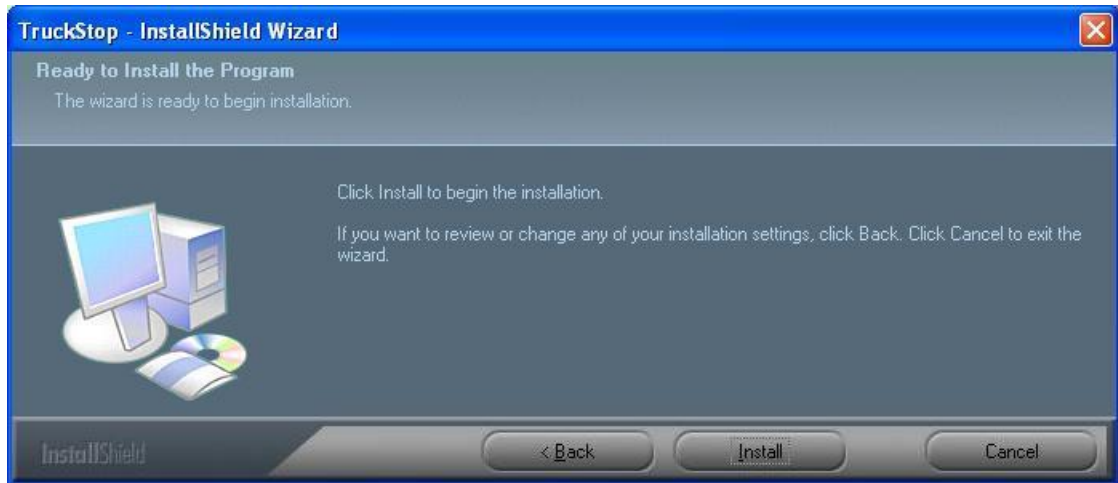


27. Wait while Windows[®] detects your port settings.
28. Click **YES** to accept the port selection.



29. The 1-Wire[®] driver installation is complete.

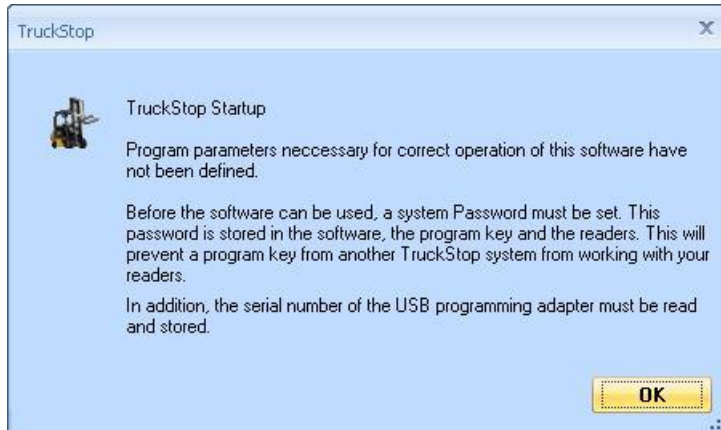
30. Ensure that the USB Host Adaptor for 1-Wire[®] Network is detected under 1-Wire Devices. (Device Manager / Computer Management)
31. Click **CLOSE**.
32. On the *TruckStop Express Installshield Wizard*, click **INSTALL**.



33. Wait while Windows[®] installs the TruckStop Express software.
34. Click **FINISH** to complete the installation.

Setup and Configuration

1. Click on **Start > All Programs > TruckStop Express > Launch TruckStop Express**.
2. Click **OK** to define a password and USB adaptor serial number.



3. Type a new password.

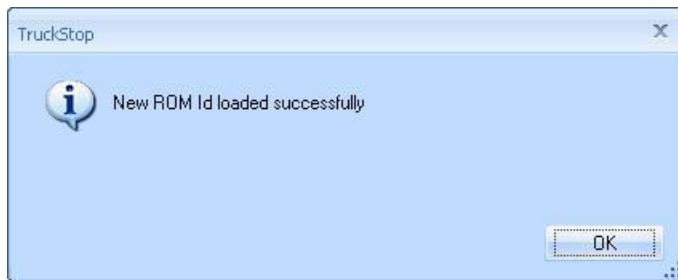
NOTE: The password can be a maximum of 8 alpha-numeric characters and is case sensitive. The password is used to ensure TruckStop Express controllers from one site can only be programmed by the software belonging to that site.

4. Click **LOAD** to load the USB adaptor serial number.



Make sure the USB adaptor drivers are installed and the USB adaptor is plugged into a USB port. Registration of the USB adaptor serial number is required for correct operation of the software. Each USB adaptor has a unique serial number. If you ever replace the USB adaptor with a different one, you must load the new serial number into the software.

5. Click OK.



6. Click OK.



NOTE: The USB serial number is a unique 16-character number.
Example: BB0000027BE5F81

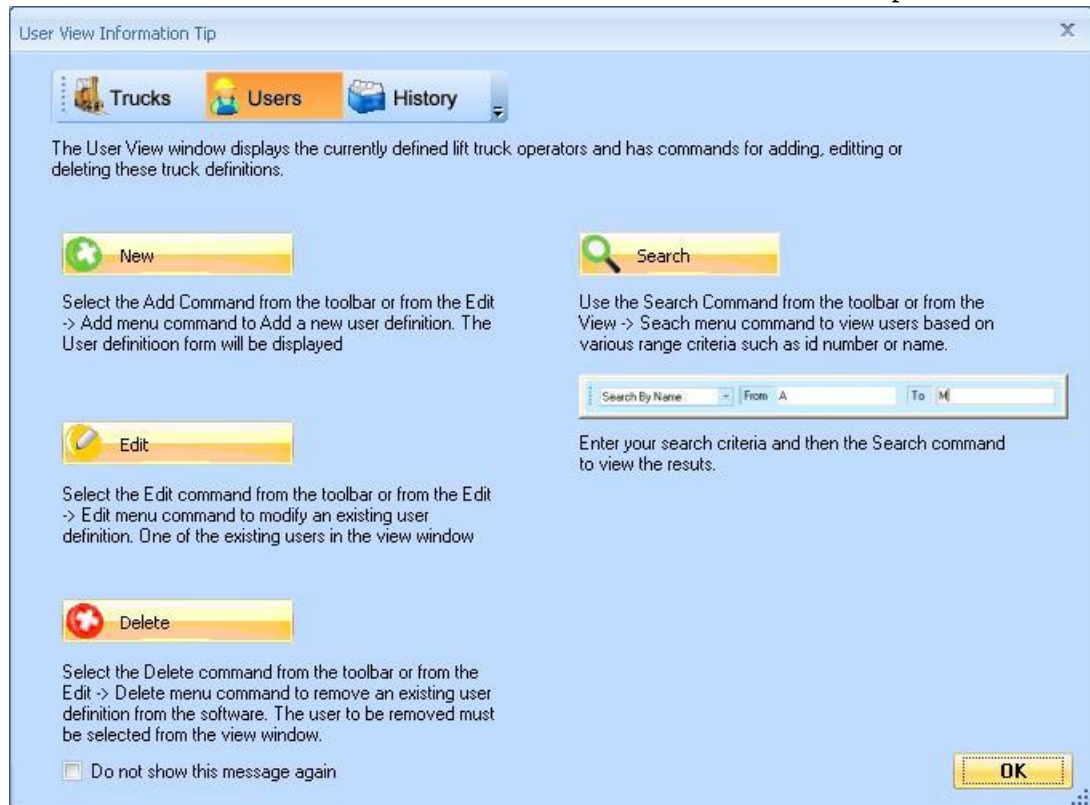
7. The *Truck View Help* screen will appear. Read through the tips.



8. Check the **Don't Show this Message Again** box and click **OK**.



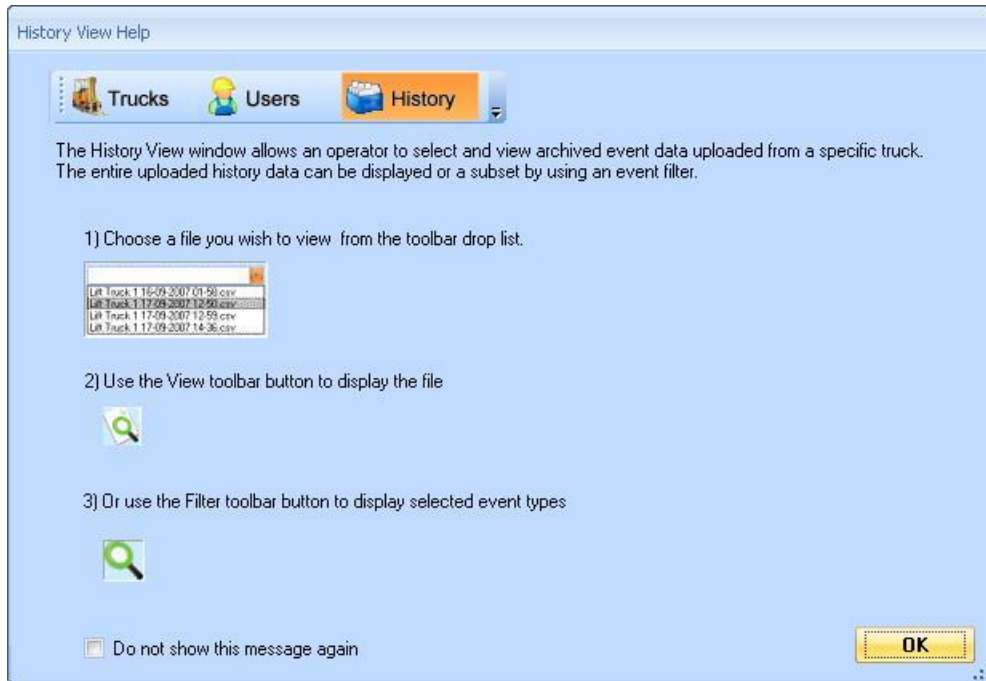
9. Click **USERS** from the Menu Bar to view the *Users View Help* screen.



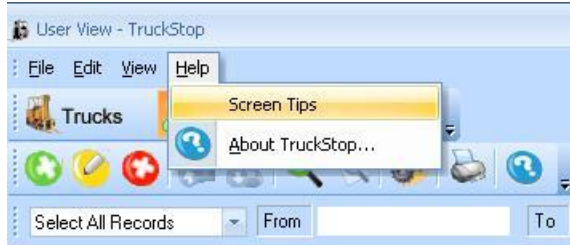
10. Check the **Don't Show this Message Again** box and click **OK**.



11. Click **HISTORY** from the Menu Bar to view the *History View Help* screen.



12. To view the help screens at a later time, click **Help > Screen Tips**.



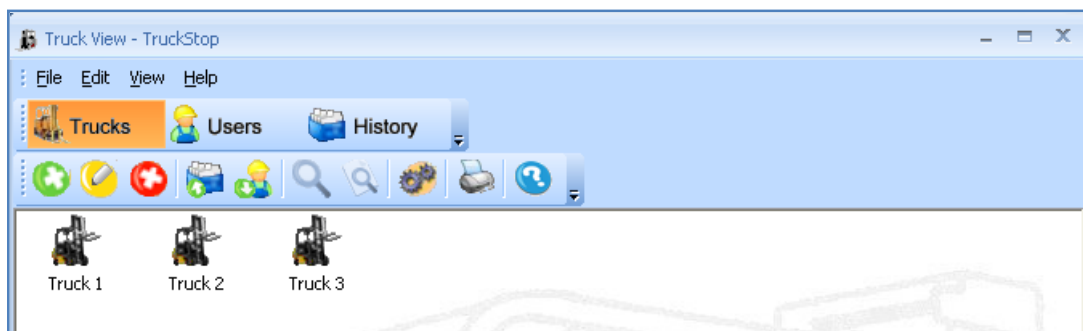
13. Check the **Enable/Reset all screen tips** check box and click **OK**.




Trucks

Each lift truck is fitted with an iButton® or Wiegand proximity reader. After turning the lift truck key in the ignition, users present their iButton® user keys or proximity cards to the readers before attempting to start the lift truck engine. Follow the steps below to create "virtual trucks" to represent each reader.

NOTE: Trucks must be created before creating any users.



CREATING A NEW TRUCK

1. Click  Trucks
2. From the Menu Bar, select *Edit > New*.



3. The following window appears:

The screenshot shows a 'Truck Properties' dialog box with the following fields and controls:

- Identification:**
 - Id:** A text box containing the number '1'.
 - Name:** A text box containing 'Truck 1'.
- Create a Setup Programming Key:**
 - Enter New Reader Time:** A text box containing '4:14:23 PM' with up and down arrow buttons on the right.
 - Below the time box is the instruction: 'Place Setup Key on programmer and select Create when ready'.
 - A 'Create' button is located below the instruction.
- At the bottom of the dialog are 'OK' and 'Cancel' buttons.

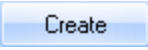
4. Enter the required information in the **Identification** section.

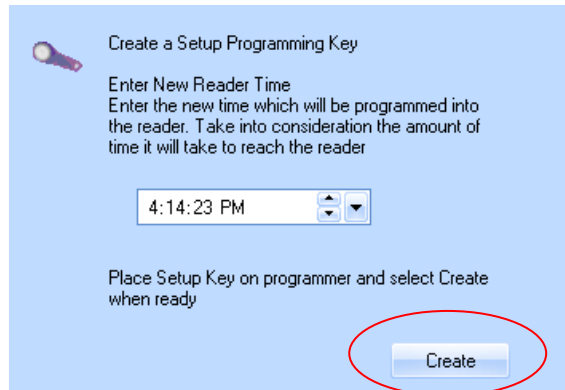
- **ID:** Each truck must be assigned a unique ID number from 1 - 256.
- **NAME:** Give each reader an appropriate, unique name.

5. Enter the New Reader Time in the **Create a Setup Programming Key** section.

NOTE: Each reader must be programmed with the correct time. You can manually adjust the time by entering a new value or by using the arrows to the right. The time shown in the window is not automatically updated as time passes, so consider the amount of time it will take to bring the programming key to the reader, and adjust the time accordingly. If it will take you 5 minutes between the time you create an programming key and the time it takes to reach the lift truck, set the time 5 minutes ahead of the current time.

NOTE: TruckStop Express does not adjust for Daylight Savings Time automatically. The time must be updated manually. See *Editing a Reader*.

6. Load the programming key by snapping it into the wand.
7. Click .



The following data is loaded when you create an programming key in SETUP mode:

- User-defined password
- Reader ID number (1-256)
- Clock (date and time)

NOTE: The reader ID number is attached to the events that happen on that specific lift truck. This information will be displayed when you upload the history file of that lift truck. The reader name is only used by the software for reference.

8. Remove the key from the wand.
9. Take the key to the appropriate lift truck.

NOTE: When the reader is in factory default mode, it will beep continuously and the LED will flash red and green.



10. Hold the programming key to the iButton® reader.



11. You will hear a a long beep from the reader. When the beep stops, setup is complete and you may remove the key from the reader. *See Appendix I - LED and BEEPER information for details.*

NOTE: For accurate auditing you must create a new setup programming key for every reader.

EDITING A TRUCK



1. Click  Trucks
2. Select the Truck  you wish to edit.
3. From the Menu Bar, select *Edit* > *Edit*.



4. Make changes as necessary.

NOTE: If you change the ID and/or the time, create a new programming key in SETUP mode and present it to the reader. If you change the name only, a new setup key is not needed.

DELETING A TRUCK

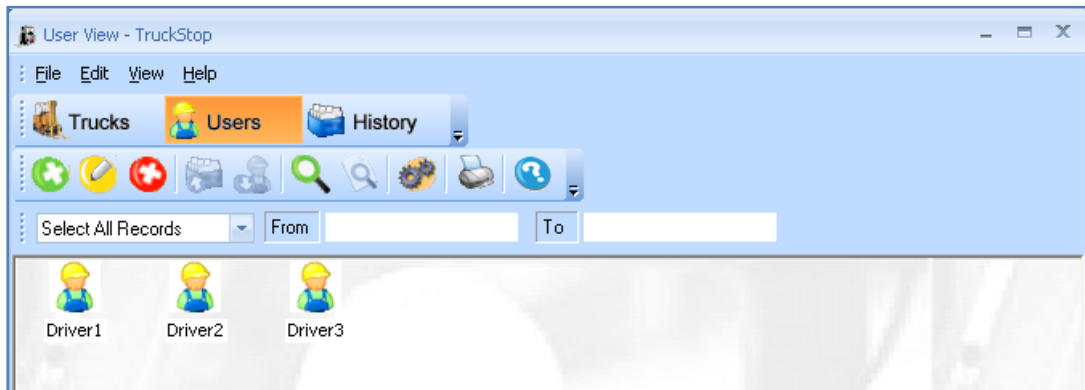
1. Click 
2. Select the Truck 
3. From the Menu Bar, select *Edit > Delete*.




NOTE: If you are removing a lift truck from the fleet in which the operating personal can operate, you may want to edit the user's who have access to the lift truck and re-program the truck.

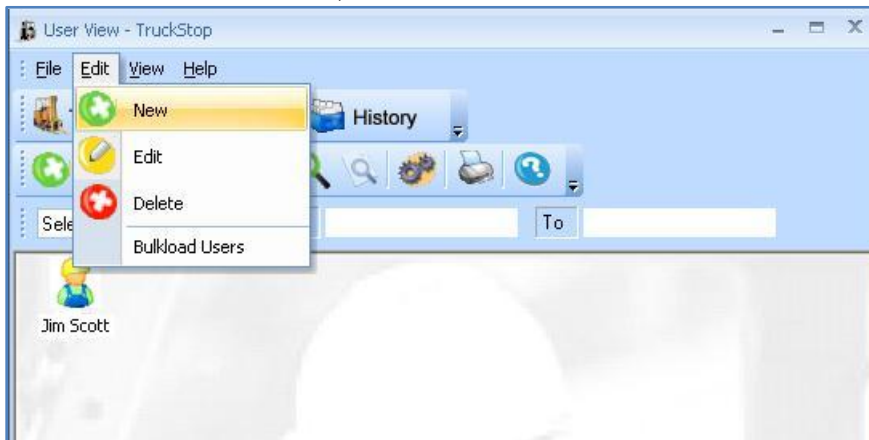
Users

Users are your lift truck operating personnel. Each user is to be assigned a user key which has an internally stored ID number. This number will be loaded and stored into the software under the user's properties. You will also determine which lift trucks (if any) the user's key will have access to operate. This information will be programmed into the readers.

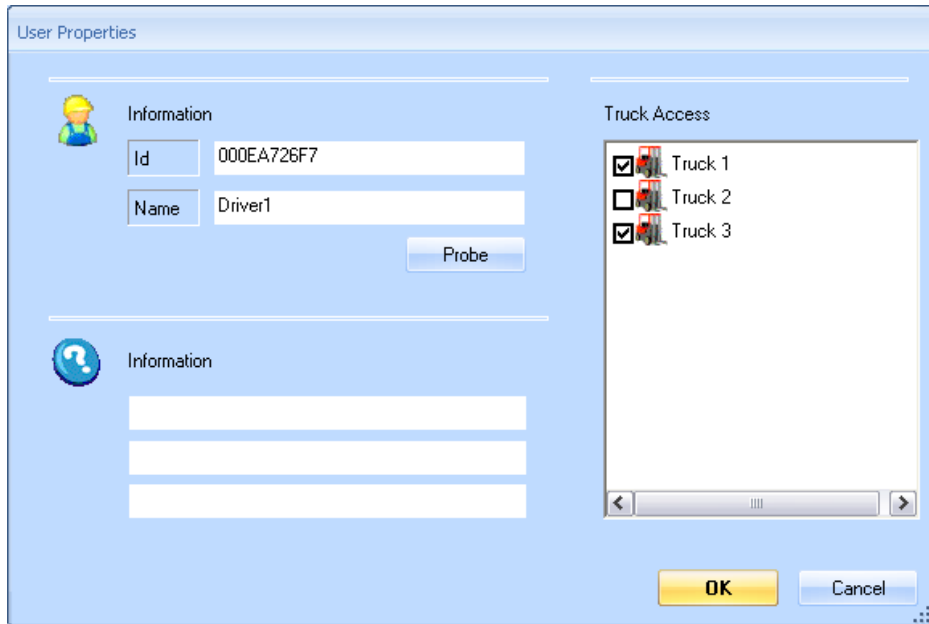


CREATING A NEW USER

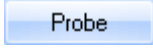
1. Click  Users
2. From the Menu Bar, select *Edit* > *New*.



3. The *User Properties* window appears:



4. Enter the appropriate identification information:

ID - Enter the ID number for each *iButton*[®] user key assigned to a user by snapping the key into the wand and clicking . If proximity cards are used, enter the 10 digit card ID. Prefix the card ID with zeroes if necessary to make 10 digits.

NAME - Enter the name of the user. Full names should be used and all names should be entered in the same format (such as “lastname, firstname”).

INFORMATION - Filling out these fields is optional. You may enter any information related to the user.

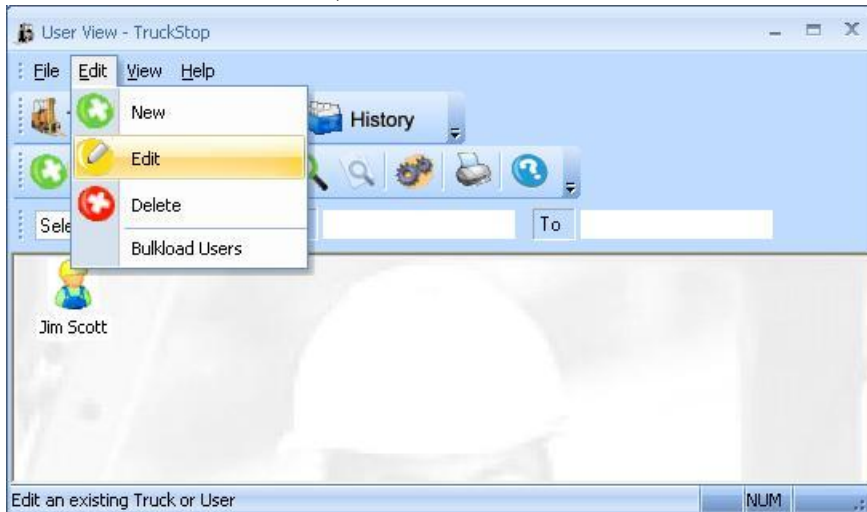
TRUCK ACCESS - Select the lift trucks that the user may operate by placing a check in the box beside each appropriate lift truck. If the box is left unchecked, the user will not have access to that lift truck.

5. When you are finished, click  .

NOTE: if you attempt to enter an ID number that already exists, the following error message will be displayed: "A record with this ID already exists." The ID and name will also be displayed.

EDITING AN EXISTING USER

1. Click 
2. Select the user 
3. From the Menu Bar, select *Edit* > *Edit*.





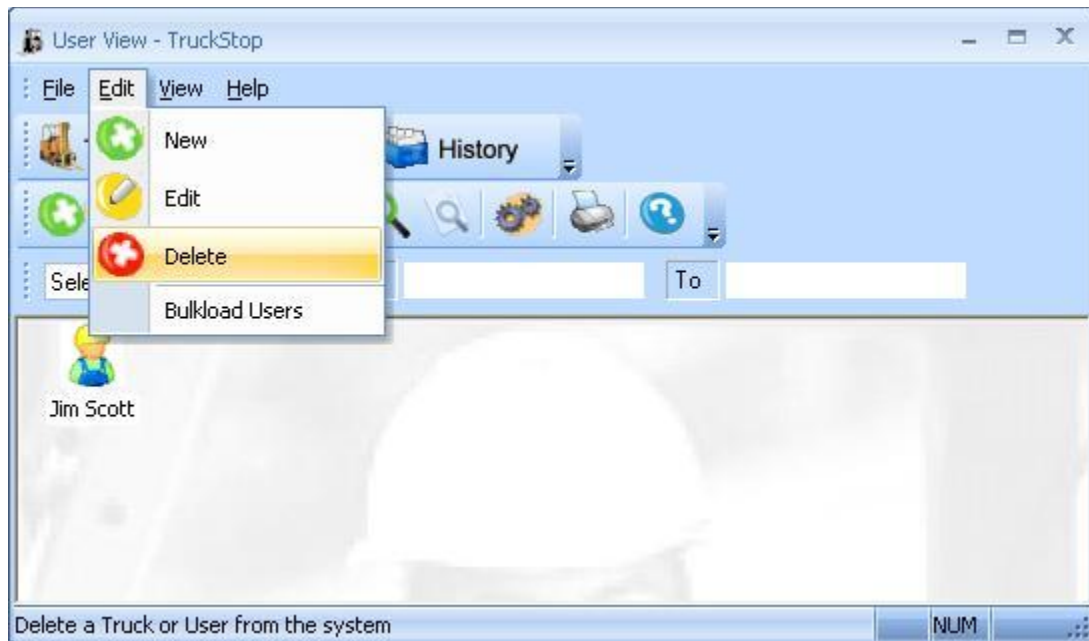
4. Edit the user as necessary.

NOTE: If you have issued a new user key to the user, all lift trucks the user has access to need to be re-programmed with the new ID number. If you have changed which lift trucks that the user has access to, the affected lift trucks need to be re-programmed. For example, if you change Driver 1 from “having access to Truck 1” to “not having access to Truck 1”, only Truck 1 will need to be re-programmed.

If you change the name or the information of a user no re-programming is necessary. This information is only stored in the software for reference only.

DELETING A USER

1. Click  Users
2. Select the user 
3. From the Menu Bar, select *Edit* > *Delete*.






NOTE: The lift trucks that the deleted user had access to need to be re-programmed. Otherwise the deleted user's key will still be able to operate the lift truck.

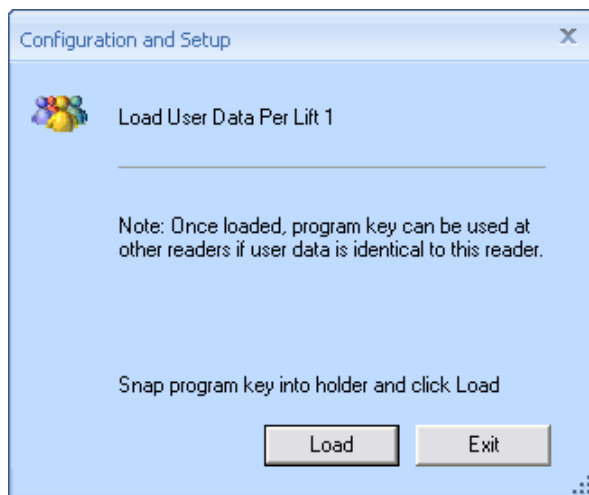
NOTE: to delete multiple users, select all users you wish to delete and press the delete


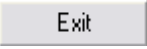
Readers

When you program a lift truck, you will load all user data into the reader so that it will know which users have access to operate the lift truck. Any time a new user is created, edited or deleted the readers must be re-programmed accordingly.

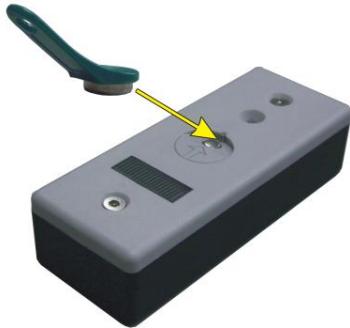
LOADING USER DATA INTO THE READERS

1. Click  Trucks
2. Select the truck reader to program 
3. From the Menu Bar, select **File** >  Download Program Data
4. The following window appears:



5. Snap the programming key into the wand and click .
6. The software will load the list of users for the selected lift truck into the programming key.
7. When the programming key (in USER mode) has been successfully created, click **OK** and then click .
8. Remove the programming key from the wand and bring the key to the appropriate lift truck.

9. Hold the key to the iButton[®] reader.



10. You will hear a series of beeps from the reader. When the sounds stop (after about 3 seconds) programming is complete and you may remove the key from the reader. See *Appendix I - LED and BEEPER information for details.*

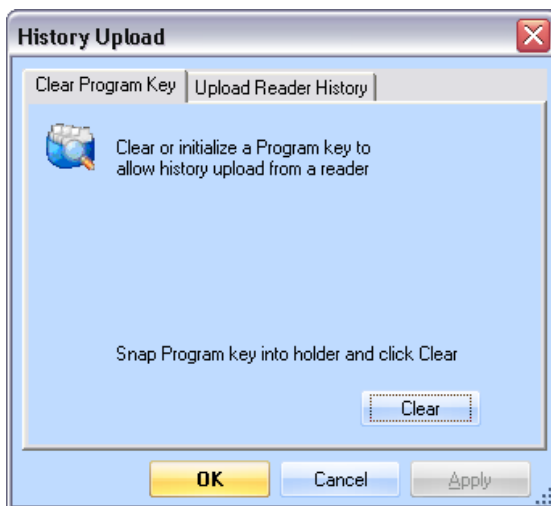
NOTE: You can use the loaded programming key at other readers if the user data is identical to this reader.

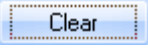
History

The TruckStop Express controller stores a history file of the last 100 events that took place on the lift truck. You may extract and view this data at any time.

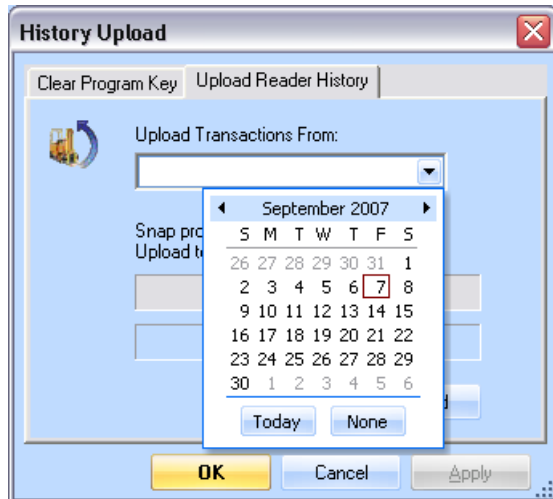
UPLOADING HISTORY

1. Click  Trucks
2. From the Menu Bar, select **File** >  Upload Historical Data
3. The following window appears:





4. Snap the programming key into the wand and click 
5. When the programming key is cleared and ready to take data history from a reader, detach the programming key from the wand
6. Hold the programming key to the iButton[®] reader. You will hear a series of beeps from the reader. When the sounds stop (after about 3 seconds), upload is complete

7. Snap the programming key into the wand at the PC
8. In the *History Upload* window, click on the **Upload Reader History** tab
9. Choose the desired date from the drop-down menu



You can click on the ◀ left and ▶ right arrows on either side of the displayed month and year to cycle through each month. By clicking on **Today**, the current date will be selected. By clicking on **None** no date will be selected and all 100 transactions will be uploaded.


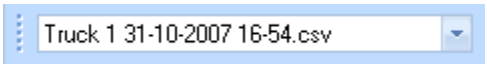

10. Snap the programming key into the wand and click 

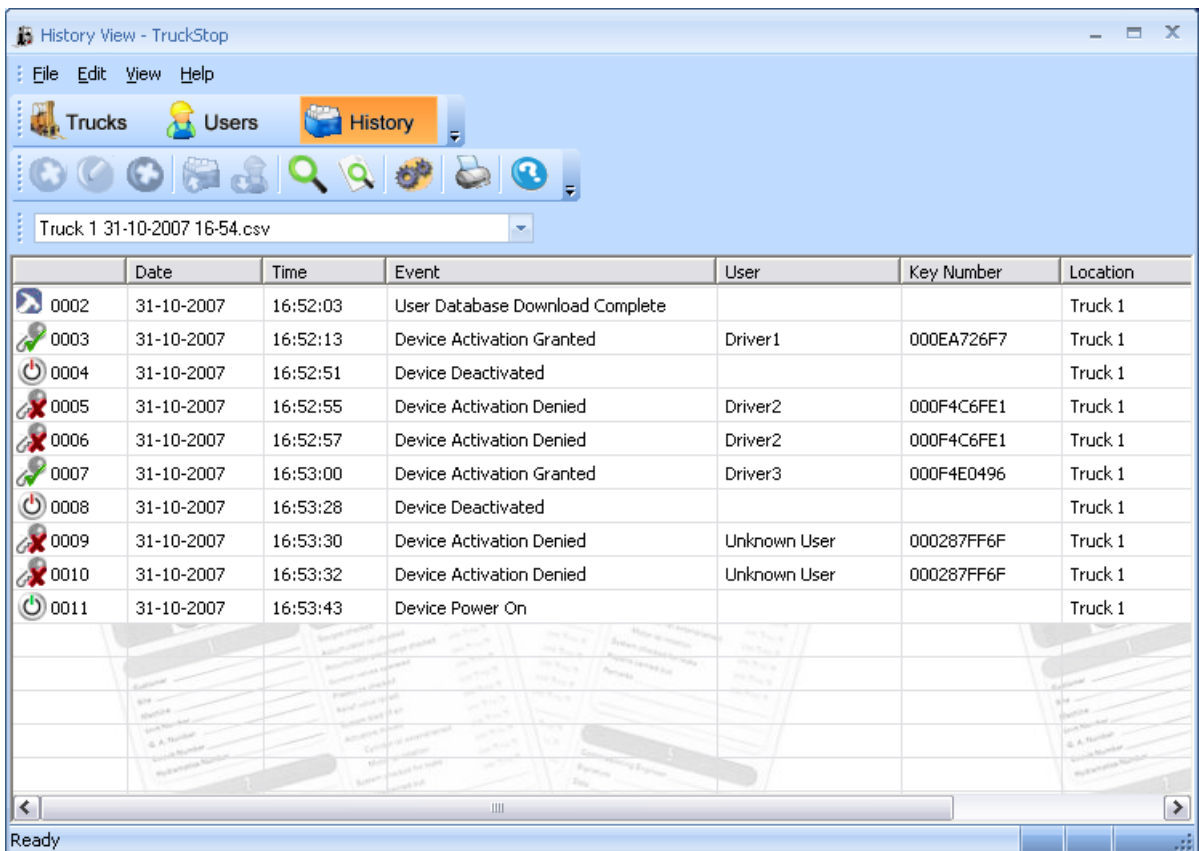
11. When you are finished, click 









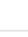

12. The history files are now uploaded. To view the history files, follow the instructions on the following page

VIEWING HISTORY

History files are saved in an “ID, Date, Time” format. This is to quickly show you which lift truck the history file is from as well as the date and time the history file was uploaded into the software.

1. Click 
2. Choose a file from the pull down menu 
3. From the Menu Bar, select **View** > 
4. The chosen audit file will be displayed

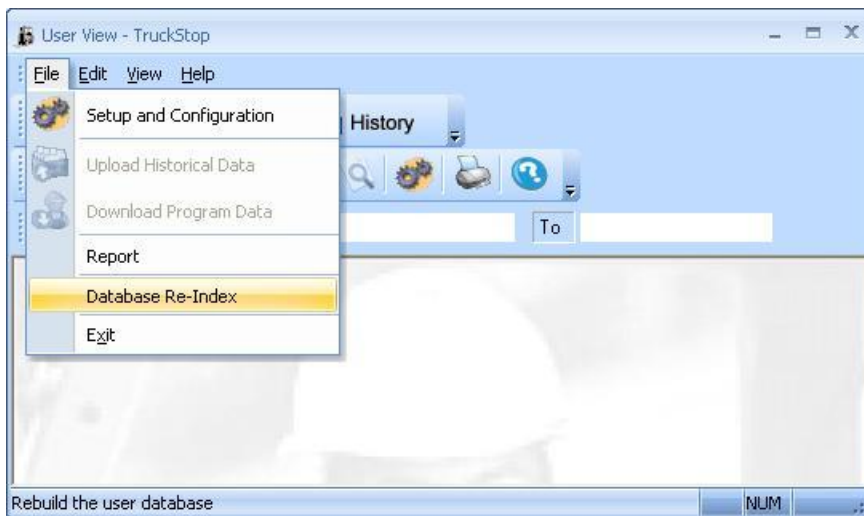


	Date	Time	Event	User	Key Number	Location	
	0002	31-10-2007	16:52:03	User Database Download Complete		Truck 1	
	0003	31-10-2007	16:52:13	Device Activation Granted	Driver1	000EA726F7	Truck 1
	0004	31-10-2007	16:52:51	Device Deactivated		Truck 1	
	0005	31-10-2007	16:52:55	Device Activation Denied	Driver2	000F4C6FE1	Truck 1
	0006	31-10-2007	16:52:57	Device Activation Denied	Driver2	000F4C6FE1	Truck 1
	0007	31-10-2007	16:53:00	Device Activation Granted	Driver3	000F4E0496	Truck 1
	0008	31-10-2007	16:53:28	Device Deactivated		Truck 1	
	0009	31-10-2007	16:53:30	Device Activation Denied	Unknown User	000287FF6F	Truck 1
	0010	31-10-2007	16:53:32	Device Activation Denied	Unknown User	000287FF6F	Truck 1
	0011	31-10-2007	16:53:43	Device Power On		Truck 1	


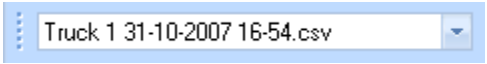

SORTING HISTORY EVENTS

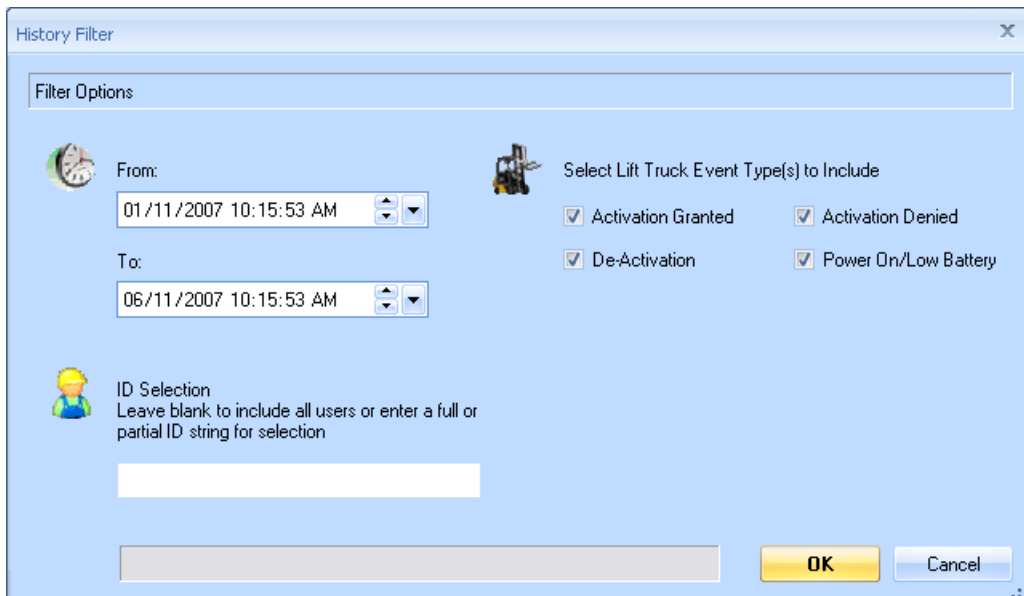
To rearrange history events into chronological order, use the database re-index tool:

1. Click **File > Database Re-Index**



HISTORY FILTER

1. Click 
2. Choose a file from the pull down menu 
3. Select **View** > 
4. The following window will appear:



History Filter

Filter Options

From: 01/11/2007 10:15:53 AM

To: 06/11/2007 10:15:53 AM


ID Selection
Leave blank to include all users or enter a full or partial ID string for selection

Select Lift Truck Event Type(s) to Include

Activation Granted Activation Denied

De-Activation Power On/Low Battery

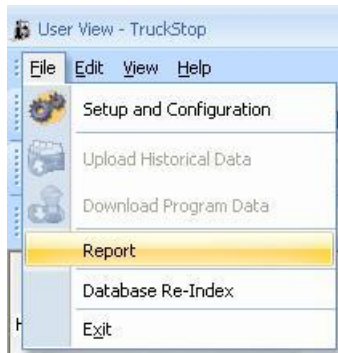
OK Cancel

5. Select the start and end times. Events that occurred within this range will be displayed in the report.
6. Select Lift Truck Event Type(s) to include. Checking the box will include those event messages in the report.
7. **Optional:** enter an ID selection. This allows you to search for the events of the users based on their ID number. If you enter a partial ID string (example: 00123) it will search for all users whose ID starts with that partial string.
8. When you are done making your selections, click 

Reports

CREATE A USER REPORT

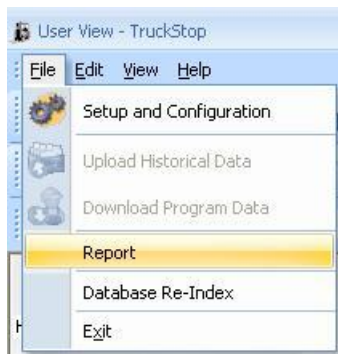
1. Click on **USERS**.
2. From the Menu Bar, select **File > Report**



3. The report will open in Notepad. You can print and/or save the file

CREATE A HISTORY REPORT

1. Click on **HISTORY**.
2. From the Menu Bar, select **File > Report**



3. The report will open in Notepad. You can print and/or save the file

Appendix I - LED and Beeper Information

The TruckStop Express reader is directly connected to the lift truck's battery power source. Operation of the unit requires the following steps:

1. turn the ignition on
2. present a valid user key or proximity card

The TruckStop express reader has two modes: ignition OFF and ignition ON, each generating different LED and BEEPER indicator behaviours.

UN-INITIALIZED READER

Status: IGNITION OFF or IGNITION ON

- LED: flashes red and green continuously
- BEEPER: beeps continuously

Solution: Reader must be initialized using a programming key (in SETUP mode)

Result: After the programming key is read and loaded into the reader:

- LED: solid red (ignition ON) or flashing red and green (ignition OFF)
- BEEPER: stops beeping

INITIALIZED READER

Status: IGNITION OFF

- LED: stays red
- BEEPER: sounds 3 times on presentation of credential

Solution: Ignition is OFF. Turn ignition ON before presenting credentials.

NOTE: The LED and BEEPER indicate proper or improper attempts to operate the vehicle. This applies for both valid and invalid users, when the ignition is OFF.

INVALID USER

Status: IGNITION ON

- LED: stays red
- BEEPER: beeps 2 times on presentation of credential

Solution: In-valid user. Present credentials for a valid user.

Result: On presentation of credential for a valid user:

- LED: goes green
- BEEPER: beeps 1 time

ACTIVATED TRUCK

Status: IGNITION ON

- LED: stays green
- BEEPER: beeps 5 times

Solution: The truck has already been activated by a valid user

PROGRAMMING A READER

NOTE: The programming key can be read by the reader whether the ignition is OFF or ON.

Status: Programming key presented to reader

LED: stays red

BEEPER: gives a 3-second warble tone

Solution: Bad read. Re-apply the programming key

NOTE: If error persists, there may be a password mismatch or unstable read-head contact.

The programming key has three modes: SETUP, USER and AUDIT.

SUCCESSFUL DATA TRANSFER:

Status: Programming key presented to reader

- LED: turns green and stays green for 1 second after beep has stopped
- BEEPER: sounds briefly

Solution: Successful data transfer

NOTE: The programming key will have different data transfer times depending on the mode. The longest data transfer time is approximately 3 seconds (for AUDIT mode).

ERROR ON DATA TRANSFER:

Status: Programming key presented to reader

LED: stays red

BEEPER: gives a 3-second warble tone

Solution: Bad read. Re-apply the programming key

NOTE: If error persists, there may be a password mismatch, unstable read-head contact, or the programming key may have been removed before the data transfer was completed.

® iButton is a registered trademark of Dallas Semiconductor Corp.

® 1-Wire is a registered trademark of Dallas Semiconductor Corp.